

# Inhibitor Cocktails

Protease Inhibitor Cocktail

Phosphatase Inhibitor Cocktail

## Table of Contents

---

### Protease Inhibitor Cocktail

HY-K0010	Solution (EDTA-Free, 100× in DMSO)	1
HY-K0011	mini-Tablet (EDTA-Free)	2

### Phosphatase Inhibitor Cocktail

HY-K0021	I: Solution (100× in DMSO)	3
HY-K0022	II: Solution (100× in ddH <sub>2</sub> O)	4
HY-K0023	III: Solution (100× in DMSO)	5

## About MCE

---

MedChemExpress (MCE) offers a wide range of high quality research chemicals and biochemicals including novel life-science reagents, reference compounds, APIs and natural compounds for laboratory and scientific use. MCE has knowledgeable and friendly customer service and technical support teams with years of experience in the life science industry. MCE will be a reliable and trustworthy partner for your research and scientific projects.

### Our Product Portfolio Includes:



Inhibitor Cocktails



Inhibitors



Screening Libraries



Disease-Related Products



Antibody-Drug Conjugate  
Related Products



Natural Products



Dye Reagents



Vitamin D-Related Products

And More!

## Protease Inhibitor Cocktail (EDTA-Free, 100× in DMSO)

Cat. No.: HY-K0010

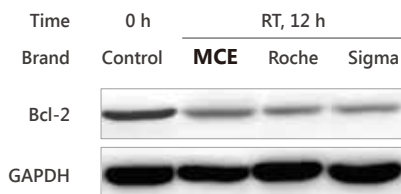
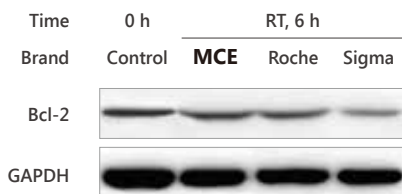
Protease inhibitor cocktail is used in mammalian cell lysates or tissue extracts to increase protein stability.

### Applications:

Western Blot, Co-IP, pull-down, IF, IHC, kinase assay and others.

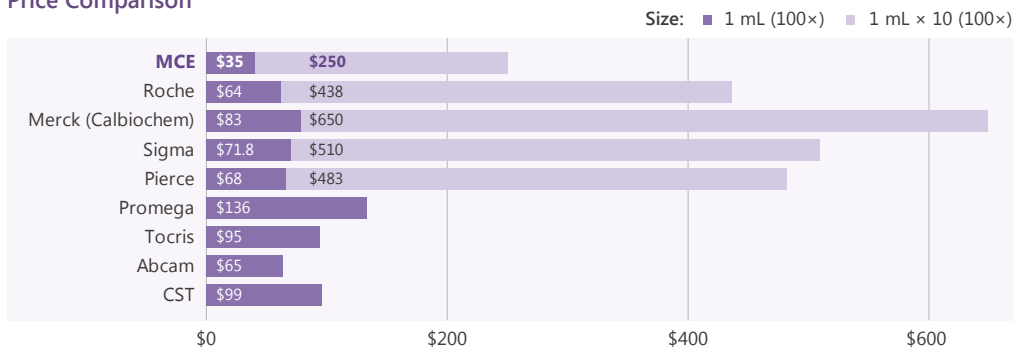
Pre-dissolved in DMSO	Price
1 mL	\$35
1 mL × 10	\$250
1 mL × 50	\$1000
1 mL × 100	\$1500

## Customer Review



MCE Protease Inhibitor Cocktail provides Bcl-2 protection in thyroid cancer cell line 8505C, and is most effective after 6-12 hours incubation at room temperature.

## Price Comparison



## Components

Ingredient	Target	100× Conc.
AEBSF	Serine proteases	104 mM
Aprotinin	Serine proteases	80 μM
Bestatin	Aminopeptidases	5 mM
E-64	Cysteine proteases	1.5 mM
Leupeptin	Serine and cysteine proteases	2 mM
Pepstatin A	Aspartic proteases	1.5 mM

## Protease Inhibitor Cocktail, mini-Tablet (EDTA-Free)

Cat. No.: HY-K0011

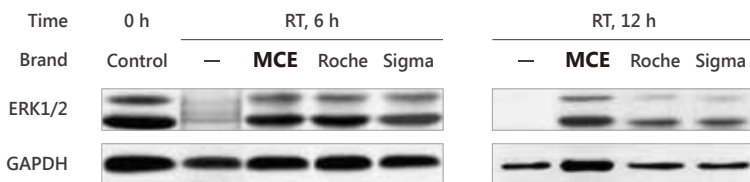
Protease inhibitor cocktail is used in mammalian cell lysates or tissue extracts to increase protein stability. **One mini-Tablet can be added to 10 mL extraction medium directly.**

mini-Tablet	Price
25 pcs	\$120
50 pcs	\$200

### Applications:

Western Blot, Co-IP, pull-down, IF, IHC, kinase assay and others.

## Customer Review



MCE Protease Inhibitor Cocktail (mini-Tablet) protects ERK1/2 in K1 cell line, and is most effective after 6-12 hours incubation at room temperature.

## Components

Ingredient	Target	Inhibitor Type
AEBSF	Serine proteases	Irreversible
Aprotinin	Serine proteases	Reversible
Bestatin	Aminopeptidases	Reversible
E-64	Cysteine proteases	Irreversible
Leupeptin	Serine and cysteine proteases	Reversible

## Phosphatase Inhibitor Cocktail I (100× in DMSO)

Cat. No.: HY-K0021

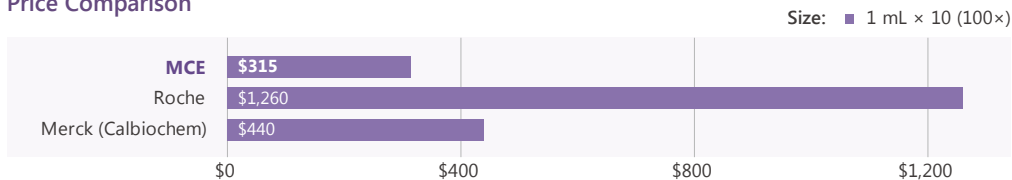
Phosphatase Inhibitor Cocktail I effectively inhibits alkaline phosphatases and serine/ threonine protein phosphatases such as PP1 and PP2A.

### Applications:

Western Blot, Co-IP, pull-down, IF, IHC, kinase assay and others.

Pre-dissolved in DMSO	Price
1 mL	\$45
1 mL × 10	\$315
1 mL × 50	\$1330
1 mL × 100	\$1990

### Price Comparison



### Components

Ingredient	Target	100× Conc.
(-)-p-Bromotetramisole oxalate	Alkaline phosphatases	2.5 mM
Cantharidin	Ser/Thr phosphatases	500 μM
Microcystin LR, <i>Microcystis aeruginosa</i>	PP1 and PP2A	500 nM

## Phosphatase Inhibitor Cocktail II (100× in ddH<sub>2</sub>O)

Cat. No.: HY-K0022

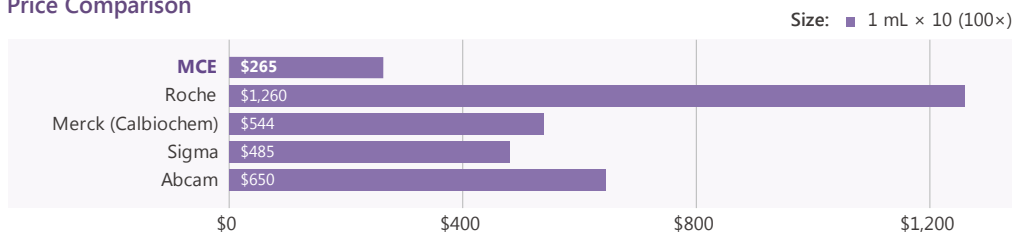
Phosphatase Inhibitor Cocktail II effectively inhibits acid and alkaline phosphatases as well as protein tyrosine phosphatases (PTPs).

### Applications:

Western Blot, Co-IP, pull-down, IF, IHC, kinase assay and others.

Pre-dissolved in ddH <sub>2</sub> O	Price
1 mL	\$38
1 mL × 10	\$265
1 mL × 50	\$1106
1 mL × 100	\$1660

### Price Comparison



### Components

Ingredient	Target	100× Conc.
Sodium Fluoride	Acid phosphatases	100 mM
Sodium Orthovanadate	Alkaline phosphatases, PTPs, ATPases	100 mM
Sodium Tartrate Dihydrate	Acid phosphatases	400 mM
Sodium Molybdate	Acid and phosphoprotein phosphatases	115 mM
Imidazole	Alkaline phosphatases	200 mM

## Phosphatase Inhibitor Cocktail III (100× in DMSO)

Cat. No.: HY-K0023

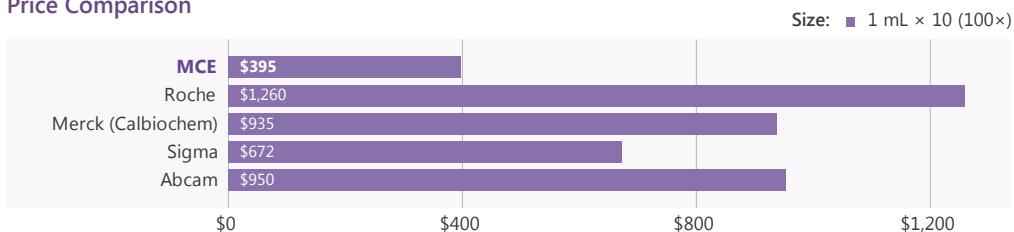
Phosphatase Inhibitor Cocktail III effectively inhibits serine/threonine and alkaline phosphatases.

### Applications:

Western Blot, Co-IP, pull-down, IF, IHC, kinase assay and others.

Pre-dissolved in DMSO	Price
1 mL	\$55
1 mL × 10	\$395
1 mL × 50	\$1840
1 mL × 100	\$2765

## Price Comparison



## Components

Ingredient	Target	100× Conc.
(-)-p-Bromolevamisole oxalate	Alkaline phosphatases	2.5 mM
Cantharidin	Protein phosphatase 2A (PP2A)	500 μM
Calyculin A	Protein phosphatases 1 and 2A (PP1 and PP2A)	1 μM

